

MPS Catalog Number:  
Date:

S1 40 90 025 MX AL 015  
01/23/2014

**END FITTINGS**

Tower End Fitting: Y-Clevis (Forged Steel)  
Line End Fitting: Eye (Forged Steel)

**MATERIAL**

Corona Ring (Tower): None  
Corona Ring (Line): None  
Corona Rings are recommended for applications of 230 kV and above  
Number of Sheds: 7 large 8 standard  
Rod Diameter: 16 mm  
Weight Estimate: 7.6 lbs 3.5 kg

**DIMENSIONAL VALUES**

Section Length (L): 37.8 in 960 mm  
Rubber Length (X): 24.5 in 622 mm  
Standard Shed Height (P1): 1.5 in 38 mm  
Large Shed Height (P2): 2 in 51 mm  
Projection Ratio (S/P): - 1.5  
Shed Spacing (S): 3 in 76 mm  
Dry Arc Distance: 26.8 in 681 mm  
Leakage Distance: 66.9 in 1,699 mm

**ELECTRICAL VALUES**

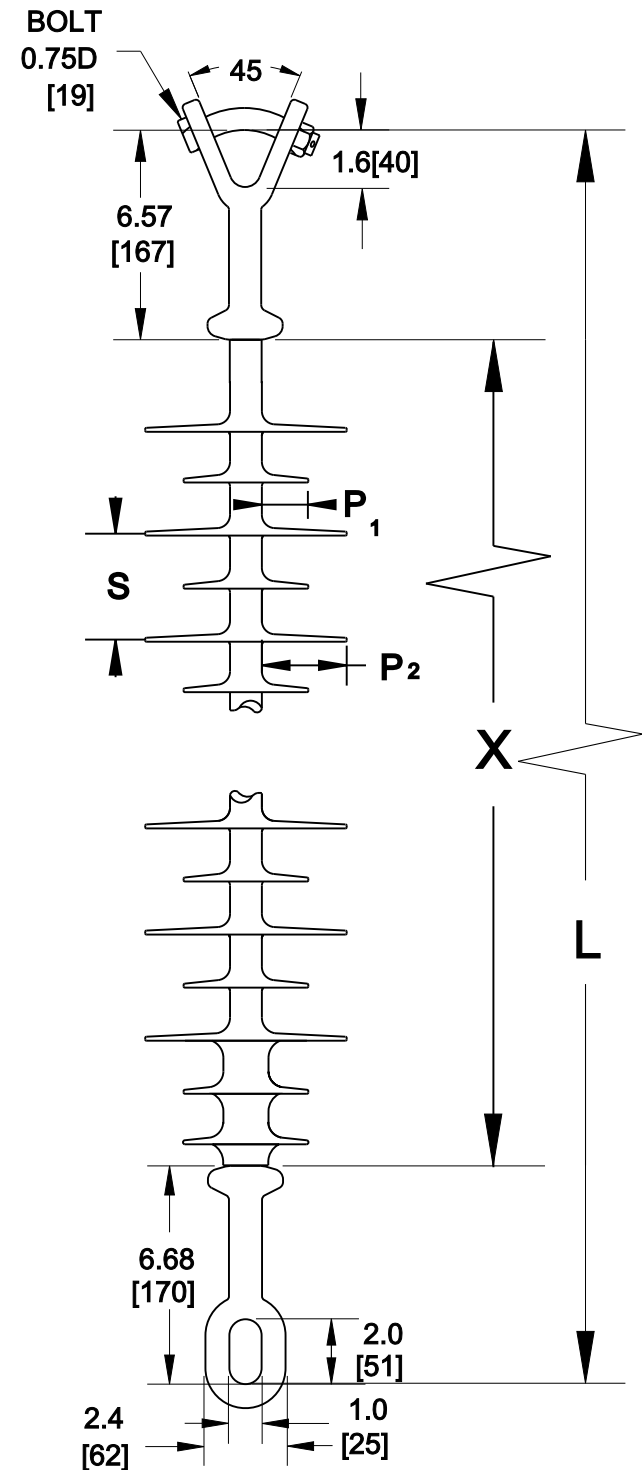
60 Hz Dry Flashover: 269 kV Min. Withstand: 251 kV  
60 Hz Wet Flashover: 243 kV Min. Withstand: 212 kV  
Pos. Critical Impulse Flashover: 468 kV Min. Withstand: 403 kV  
Neg. Critical Impulse Flashover: 503 kV Min. Withstand: 444 kV

**MECHANICAL VALUES**

Specified Mech. Load (SML): 25,000 lbs 111.2 kN  
Routine Test Load (RTL): 12,500 lbs 55.6 kN

This drawing contains confidential information that is property of MacLean Power L.L.C ('MacLean'). Use of MacLean's confidential information without MacLean's express written consent is strictly prohibited and may expose you to legal liability. If you believe that you received this material in error, please destroy it or return it to 'MacLean Power, L.L.C., 7801 Park Place Rd, York, SC, 29745, USA.'

Dimensions: inches [millimeters]  
Note: Drawing not actual depiction of insulator appearance



Silicone Rubber Sheath & Sheds  
Complies with applicable ANSI and IEC standards.